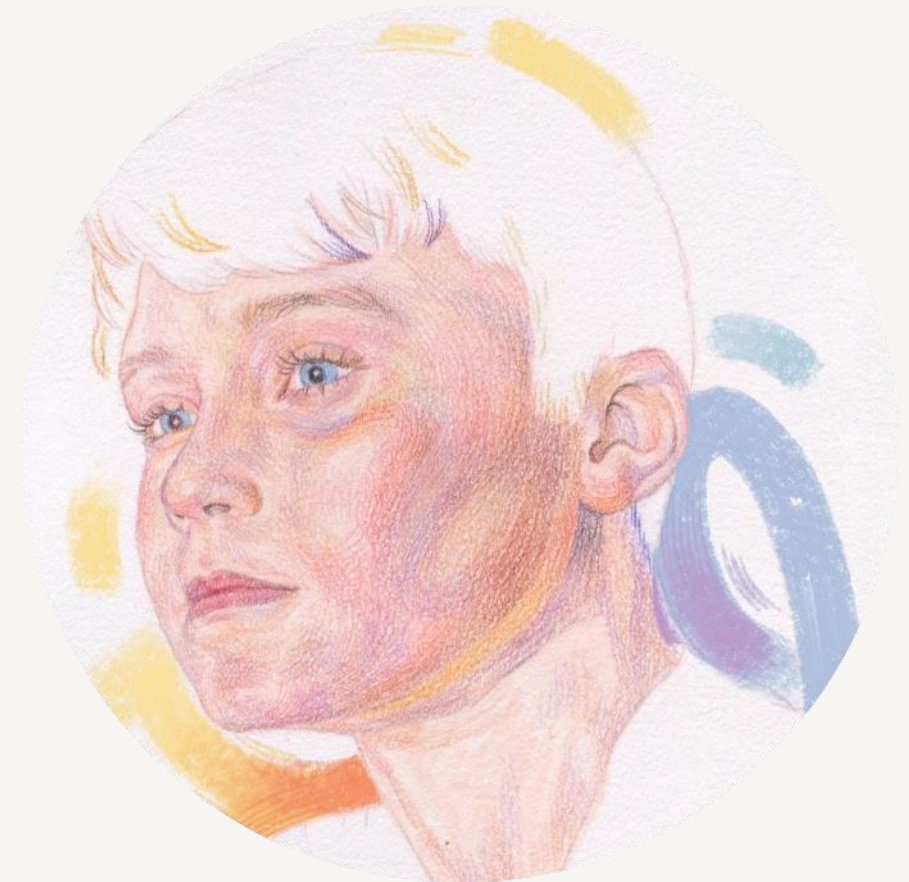


Right  
There

# Job Pack Painter

(February 2024)



# Job Purpose

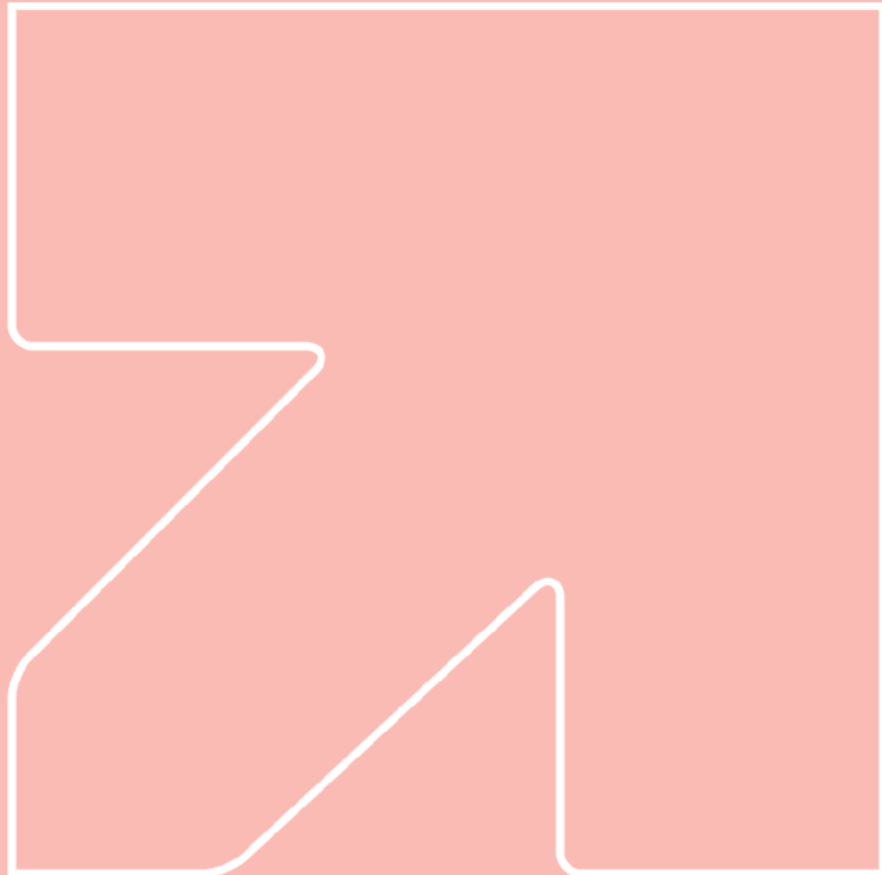
## Painter



The Painter, part of the Repairs and Maintenance Team, will carry out reactive and planned redecoration works, to ensure that all Right There properties are in line with health and safety requirements, legislation and internal quality standards. They will work as part of the Repairs and Maintenance Team to ensure that properties are available to let as quickly as possible.

The team is responsible for the management of a portfolio of over 400 properties of various size, predominantly in the Glasgow area and includes technicians, general maintenance workers, painters and joiners

# What's inside



About Right There	4 - 5
Our Vision and Mission	6
Role Responsibilities	7-8
Requirements	9-10
Our Values	11
Role Details	12
Our People Benefits	13
How to Apply	14
Contact Us	15

# About Right There

We are Right There, a charity that provides tailored support for people, at home, and in the community. We are here for people who are living with the effects of homelessness, poverty, addiction, or family breakdowns.

Rooted in the hearts of local communities across Scotland, we support people on their journey to creating a safe, supportive place to call home. We help individuals and families affected by homelessness and improve mental health and wellbeing through mentoring and counselling.

We want to challenge stereotypes - it doesn't matter what the situation is - we're not here to judge, only to help. Our approach is about creating trusting relationships and nurturing people's strengths, and our 200 dedicated staff, mentors and volunteers play a crucial role in this.

We are here to offer the right support at the right time, including breaking down financial barriers; accessing the private rental market; linking up with local health, employment and training services to help people make connections within the community; and helping people feel happier, safer, and more confident to take steps to improve their own lives. Every person's story is unique, and everyone's route home is different, so we tailor our response to the individual.

Our community roots as a charity go back almost 200 years. We believe our work is more important than ever and we are looking to grow our support (no matter how big or small), so we can prevent more people becoming homeless and being separated from the people they love.





# Our key areas of focus



## For People

Providing counselling, mentoring and tailored family support for those at risk of social inequalities.



## At Home

From emergency accommodation to housing support – we provide safe and supportive places to call home.



## In The Community

We equip people to live independently and build stronger community connections.



## **Our Vision**

A world where everyone has an equal chance to create a safe and supportive place to call home.

## **Our Mission**

We meet people where they are in life with no judgement; walking alongside those who need support, and preventing them becoming homeless or separated from the people they love.

# Roles & Responsibilities

## Redecoration of void properties and maintenance of tenanted properties

- Effective delivery of a sustainable, high quality redecoration service for all domestic and commercial properties within the Right There portfolio
- Recording of labour, materials, and consumables used in the delivery of the service
- Contribution to the continuous development of Right There services
- Prepping of walls, ceilings, surfaces, and woodwork
- Taping Work
- Painting of both internal and external surfaces with gloss, emulsions, wood stains, varnish, primer and undercoat.
- Stripping, cutting and hanging wallpaper
- Working in both domestic and commercial properties, whilst the majority of work is internal, may include external redecorations
- Planned maintenance, redecorations and property inspections on a scheduled basis
- Responds to emergency redecoration requests as required
- Completion of void inspection and planned maintenance paperwork
- Completion of jobs orders

## Reporting and Compliance

- Consistent adherence to all relevant policies and procedures ensuring best practice and legal compliance
- Report any health and safety concerns using the reporting mechanisms in place
- Use of internal Housing Management System to log all time, materials and consumables used in carrying out duties
- Comply with relevant Health & Safety legislation
- Ensure Right There's guidelines, policies and procedures are adhered to
- Comply with requirements of relevant external agencies



## Maintenance Team Member

- Develop and maintain good communication and working relationships with line manager, colleagues, contractors and people we support
- Work cooperatively with others as part of a team demonstrating commitment to service objectives
- Have a high standard of professional integrity with colleagues and other providers
- Establish and uphold clear professional boundaries at all times.
- Be proactive in personal development, use feedback from others and identify own development objectives
- Attend and participate in training and engage in reflective practice to share learning experiences.
- Actively participate in regular team meetings providing valuable input and feedback to meet the needs of the Property Team and commit to its development and improvement
- Feedback on the review of organisational policies & procedures and local guidelines.
- Ability to work towards performance targets to achieve agreed result
- Promote Right There services through agreed mediums
- Represent the Right There brand following agreed ways of working, demonstrating values led behaviours, and taking pride in wearing the Right There uniform.



# Essential skills and experience

- ✓ Qualified with a recognised trade
- ✓ Demonstrate a proactive approach and ability to be solution orientated and take initiative
- ✓ Ability to work cooperatively with others as part of a team demonstrating commitment to group objectives
- ✓ Ability to understand and consider the views, concerns and needs of others when taking action
- ✓ Ability to communicate effectively with people at all levels in a variety of situations
- ✓ Ability to plan and organise a workload with competing demands and priorities utilising time and resources effectively
- ✓ Ability to implement the aims and objectives of Right There at functional level
- ✓ Commitment to training and professional development, including keeping up to date with all relevant legislation.
- ✓ Full UK driving licence



# Desirable Knowledge

- ✓ Experience of working in a similar environment
- ✓ Experience of carrying out a wide range of redecoration works including prepping, painting and wallpapering
- ✓ Thorough understanding of Health and Safety issues.
- ✓ Adopt a flexible approach to working hours
- ✓ Experience of working in a similar environment
- ✓ Understanding the needs and rights of people we support
- ✓ Awareness of issues surrounding homelessness
- ✓ Computer literate
- ✓ Current valid CSCS card
- ✓ Knowledge of Health and Safety issues.
- ✓ Health and Safety Training
- ✓ First Aid Certificate



## Values

At the heart of Right There is our values. And we are proud to live these every day; to be the best we can be for those involved in our work.

## Respect

We treat everyone the same way – with dignity and respect. You'll find no judgement here.

## Integrity

We take great pride in having high standards and transparency about our goals and progress as a charity.

## Compassion

We understand the importance of empathy, and the power of a shoulder to lean on.

## Aspiration

We believe firmly in the goodness in people; their strengths and what makes them unique.

## Reflection

We are always learning to be the best we can be.

# Role Details

**Contract:** Full time, permanent, 35 hours per week.  
**Salary:** £24,702 - £28,571 per annum SCP 21-26  
**Reporting to:** Maintenance Supervisor

- Working hours are 35, Monday to Friday – worked flexibly between the hours of 8.00am to 6.00pm, with one-hour unpaid break.
- Your core place of work will be in 141-145 Rosemount Business Park, Charles Street, Glasgow, G21 2QA. You are required to work across all Right There services and property locations.
- You may be required to work from such other place as the organisation may reasonably require from time to time.
- Annual leave entitlement of 210 hours holiday (equivalent to 6 weeks) pro rata per year in the first year rising to 280 hours (equivalent to 8 weeks) pro rata per year in the second. This includes public holidays.
- All appointments are subject to a minimum of a 12-week probationary period.
- You will be automatically enrolled into the People's Pension in the month that you will complete 3-months of employment, provided you meet the auto-enrolment criteria.
- It is the nature of the work of Right There that tasks and responsibilities are, in many circumstances unpredictable and varied. All employees are, therefore, expected to work in a flexible way when the occasion arises.



# Our People Benefits



We know how dedicated our people are and we want to help you achieve a good work/life balance – and make it easier to enjoy life's special moments!

That's why we've got a range of enhanced family-friendly and wellbeing benefits to give you some well-deserved perks of being a Right There employee.

## Benefits include:

- Hybrid working where appropriate – work where is best for you and your role
- Enhanced maternity, paternity, adoption, and shared parental leave
- Employee 24-hour counselling and wellbeing services
- 6 weeks annual leave, rising to 8 after a year (plus you can purchase up to 5 more days)
- Life insurance 4x your salary
- Dedicated training and development plans
- Cycle to work scheme

Read more about our benefits by visiting <https://rightthere.org/whats-it-like/>

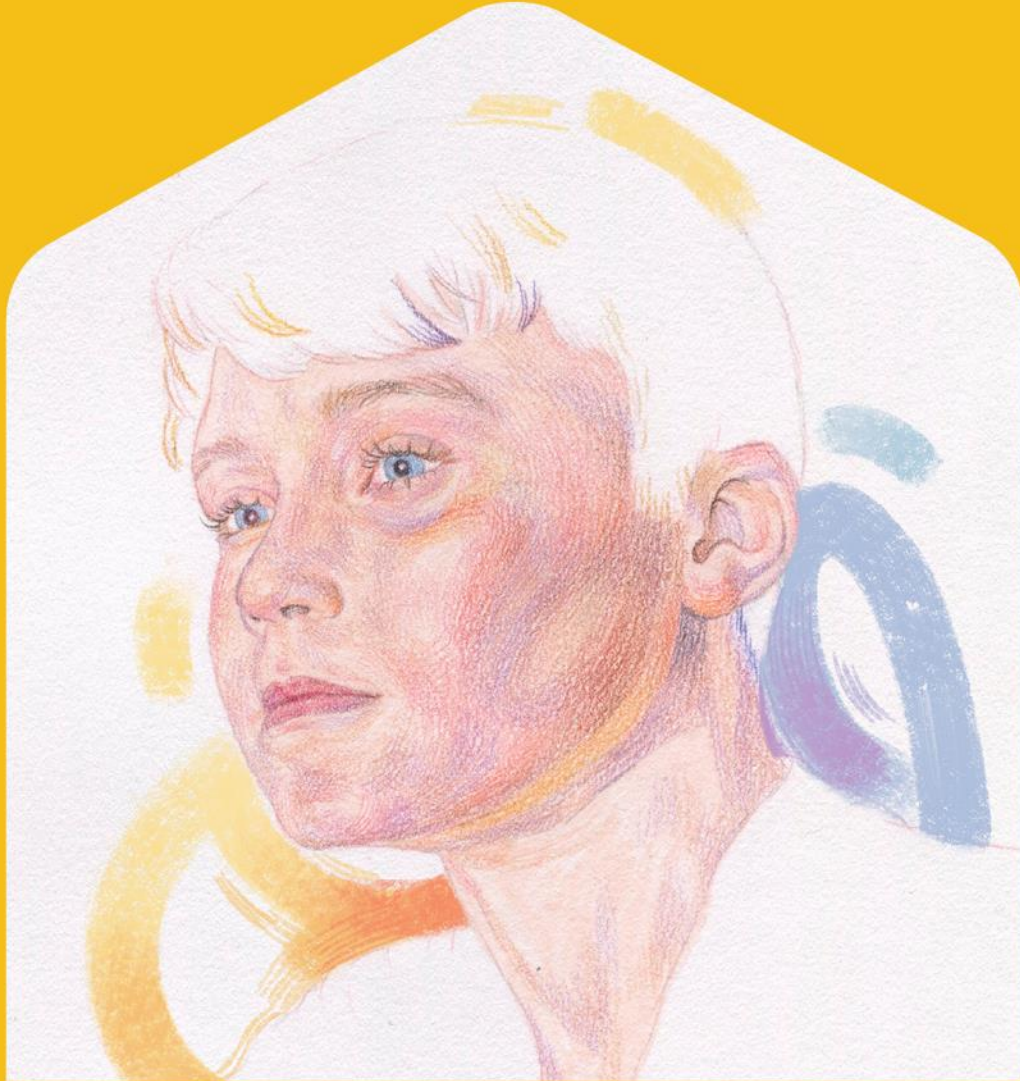
# Right There

## How to Apply

To apply send your CV and a cover letter outlining why you want to work with us, and how you meet the experience, skills and behaviours expected for this role.

Deadline: 5pm on Friday 25<sup>th</sup> October 2024

Email [recruitment@rightthere.org](mailto:recruitment@rightthere.org)



[www.rightthere.org](http://www.rightthere.org)  
[hello@rightthere.org](mailto:hello@rightthere.org)

Follow us search 'Right There':



**Thank you.**

**Good luck with your  
application.**

**For People.  
At Home. In the Community.**